

The BPU60 Vet provides all the power you need for today's challenging veterinary clinical environment, yet remain ultra-portable, ultra-affordable. With its cutting-edge imaging technologies, comprehensive functions, precise and intuitive workflow, ergonomic and eco-friendly design, versatile transducers for different diagnosis of Abdomen, Obstetrics, Cardiology, Small parts, Vascular, Tendon, etc., we firmly believe the BPU60 to be the very best portable Equine, Farm & Small Animals ultrasound in its class today.

Comprehensive Applications

Applicable to equine, large animal, small animal, zoo mammal, and marine mammal medicine body scans, for example, Abdomen, Reproduction, Gynecology, Urology, Vascular, Musculo-skeletal, Cardiology, Orthopedics, Emergency, Small Parts

Accessories

Footswitch
Video Printer
Biopsy bracket
Hard disk (1T)
SSD hard disk
Color ink-jet printer
B/W video printer

ADD: 4/F, BMV of Yinjin Building, Block 71, Baoan Centre District, Shenzhen 518010, P.R. China

Tel: +86-755-26564580

E-mail: sales@bmv.cc

Web: www.bmv.cc

BMV Technology Co., LTD.

Set R&D, production, sales in one of the medical equipment manufacturers, service providers

BMV & BPU® are registered trademarks or trademarks owned by BMV Technology Co., LTD.

©2008-2019 BMV Technology Co., Ltd. All rights reserved.

Specifications subject to changes without prior notice.

P/N: ENG-S9-BROCHURE-210285X1 0P-201906



EMPOWERING
all your clinical needs

BPU60 Vet



Visit www.bmv.cc for more information
facebook.com/bmvtechnology | twitter.com/bmvtechnology



Mobility

Innovative Design

- ▶ Light Weight(7.5kg)
- ▶ 15" High Resolution LED(rotatable 0°~45°)
- ▶ Built-in Battery(120 minutes) for off-site, emergency care
- ▶ Dual active probe connectors
- ▶ Built-in probe holders
- ▶ Rich Peripherals Ports (LAN,VGA,HDMI,USB,Video,Remote)
- ▶ Ergonomic Trolley(Accessory box, printer&probe holders)

Advanced Technologies

- ▶ Digital front-end technology
- ▶ Multi-beam processing technology
- ▶ Tissue harmonic imaging
- ▶ Invert harmonic imaging
- ▶ Speckle noise reduction technology
- ▶ Spatial compounding imaging
- ▶ High precision dynamic focus imaging
- ▶ iBscan™ quick image optimization technology



Powerful

Advanced Functions



Patient ID/Owner Name

The patient demographic screen is dedicated to the veterinary environment with fields for the animal's name, species, and breed.

Measurements and Reports

Confirming BMV's dedication to the veterinary world, complete veterinary measurement packages, including abdominal, cardio-vascular, and reproductive gestational calculations provide easy examination documentation

Efficient Workflow and Convenient Operation

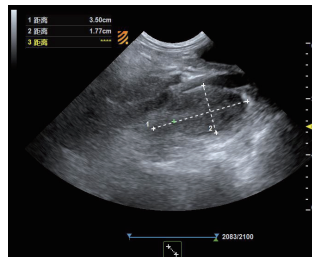
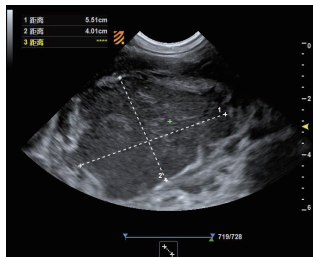
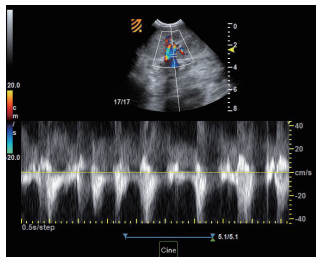
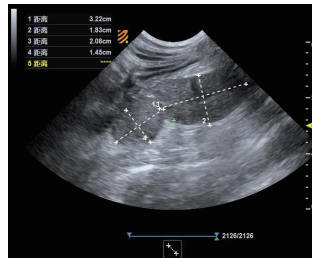
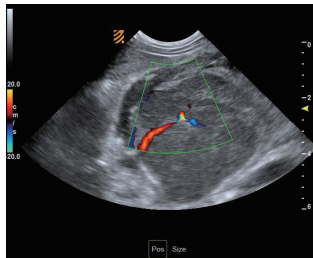
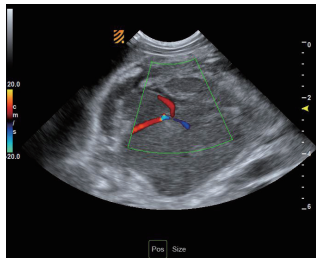
- ▶ B, B/B, B/M, M, 4B, Color Doppler, CW Doppler, Power Doppler, Tissue Harmonics,
- ▶ Auto Optimization, Needle Visualization
- ▶ Automatic trace on PW frequency map;
- ▶ Automatic spectrum calculation;
- ▶ Automatic saving for preset or to default status;
- ▶ Automatic standby protects host and the transducers,prolongs the system lifespan;
- ▶ Built-in workstation helps quickly searching patient data and reviewing cines, which facilitates the doctor's operation;

DICOM Connectivity

The system is easily implemented in any DICOM environment. Easy networking, printing, and communication with external PCs are just one click away.

Confidence for Diagnosis

The BPU60 Vet provides excellent image quality in a wide range of applications. Besides B-mode, M-mode and Doppler imaging, the system offers multiple technologies to meet every clinical need.



High-definition imaging platform
Professional image processing technology

Stable performance | Quickly diagnosis | Amazing performance | Beyond your expectation

Full High-tech Probes Family, Comprehensive Vet Clinical Applications

Clear imaging quality with more than 12 different professional transducers



P22Us/P52Us:
Applications: Animal Cardiac, General Abdominal

- 2.0 - 6.5MHz
- Up to 150° scan angle



L54Us/L67Us/L74Us/ L1025Us:
MSK in dogs and cats and general imaging of exotic animals

- 15-5 MHz
- 40 mm



C320Us/C615Us:
Abdominal scanning and basic cardiology in dogs, cats, and exotic animals

- 9-5 Mhz
- Up to 93° scan angle



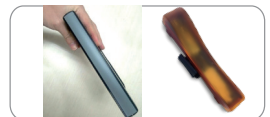
C36Us :
General imaging in large dogs and large-sized exotics

- 7.5-2.5 MHz
- Up to 83° scan angle



R36Us/R67Us
For all frequently occurring cases in daily large animal practice.
This probe is excellent for reproductive and basic tendon scanning

- 4.5 - 9.0MHz/10-5 Mhz
- Up to 83° scan angle/ 64 mm



L318Us:
Animal Science probe for scanning back-fat of ruminants

- 3.5 MHz
- 180 mm
- Standoff Swine& Bovine: For enhancing scanning with the L318Us transducer immediately beneath the body surface