



Class IV Veterinary Laser Therapy Device



Contents

Precautions	01
Precautions	02
Features	02
Indications	03
Application areas	03
Included	04
Device parts	05
Specifications	06
Operations	06
Charging Instructions	08
FREQUENTLY ASKED QUESTIONS	08
Troubleshooting	11
Maintenance and Preservation	11
Warranty	12

Introduction

Laser Therapy technology had been approved by NASA and FDA. It reduces inflammation and that results in pain reduction. Laser Therapy is effective in treating sports pain, chronic conditions, post-operative pain, muscle recovery and wound healing etc. Laser therapy treatment is safe, painless and fast. Treatments to deeper tissues are administered in a few minutes. Laser therapy utilizes the body's own healing powers by stimulating cellular activity. Despite the short treatment times, laser therapy treatments initiate a healing process that continues to actively reduce inflammation for up to 24 hours after treatment.

Our Class IV Veterinary Laser Therapy Device is a type of laser therapy equipment designed specifically for veterinary applications. It uses high-power laser technology to promote healing, reduce inflammation, and relieve pain in animals.

The Class IV designation refers to the power output of the laser. This high power allows for deeper tissue penetration and faster treatment times compared to lower power devices.

Some common applications for the Class IV Veterinary Laser Therapy Device includes treating musculoskeletal injuries, reducing inflammation in joints, and promoting wound healing. It can also be used for post-surgical pain management and to treat chronic conditions such as arthritis.

Overall, the Class IV Veterinary Laser Therapy Device is a valuable tool for veterinary professionals looking to provide non-invasive, drug-free pain relief and healing for their animal patients.

Precautions

1. Do not continuously use the device more than 10 minutes.
2. Do not shine the device lights directly into the eyes.
3. Discontinue using if the device overheats.
4. Do not use the device if the skin is light sensitive or animals are currently using medication that may cause sensitivity of the skin to light.
5. Do not use without permission from the veterinary if the animals:
Are pregnant or suspect may be pregnant.
Are taking drugs known to cause light sensitivity.
Have any suspicious or cancerous lesions.
Have a bleeding disorder
6. Contact veterinary if the animals have any medical questions regarding the use of this device.
7. Do not use close to a pacemaker without permission from the cardiologist.

Features

- Safe for All Types of Animals and for All Ages 100%
- Natural Drug Free Chemical Free Non-Invasive
- Non-Ablative (does not damage the skin)
- Painless (does not itch, burn or sting)
- No Adverse Short or Long Term Side Effect
- Portable and rechargeable use outdoor

Indications

Class IV Veterinary Laser Therapy Device is intended to treat:

- Domestic animals–dogs, cats, birds etc.
- Large Livestock– cattle, sheep, goats, pigs, bucks, etc.
- Horses.

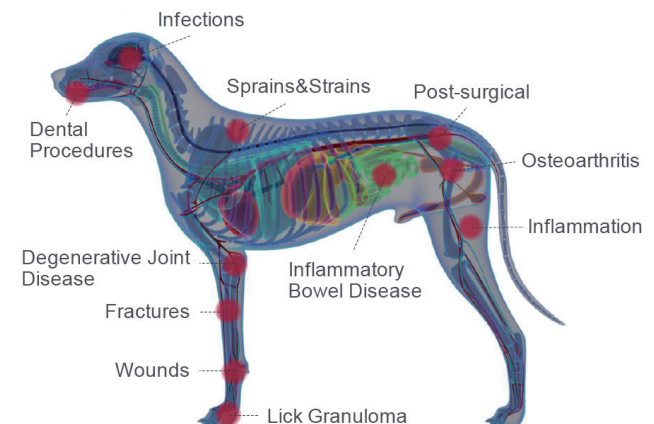
Alleviate pain: reduces muscle and joint pain and pain from chronic arthritis and repetitive stress disorders.

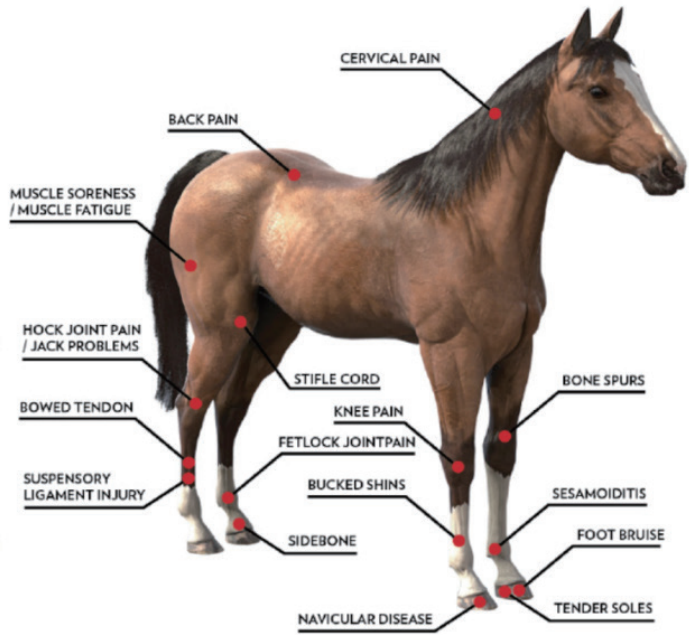
Reduce inflammation/arthritis: promotes healing and boosts circulation.

Recover from injury: decreases pain and inflammation; breaks down scar tissue; loosens stiff joints.

Skin conditions: wound healing, lacerations, hyaloma tick bite necrosis, hot-spots, abscesses, saddle sores etc.

Application areas





Device parts



Included

- Handheld laser therapy device
- Protective eyeglasses
- AC adapter
- Aluminium suitcase
- User manual



Specifications

Laser medium	GaAIs Semiconductor
Laser wavelength	808nm and 650nm
Terminal laser output	4×808nm laser beams, 500mW each beam 10×650nm laser beams, 30mW each beam
Total output power	2300mW
Battery capacity	Built-in lithium battery 5200mAh
Working mode	Continuous and pulsed mode 10Hz
Case Material	Aluminum
Display	White LED display
Time setting	30s-3 minutes options, each grade increases 30 seconds
Battery charger	American standard 2 hours on a full charge

Operations

1.Functions Setting and Keys Operations

1.1 Turn on

- 1) Turn the key and red button to the right.
- 2) Buzzer will “tick “ and all the icons on LED screen will light up when the device turned on, The default status is 30 seconds, “P” icon (Pulsed working mode) without Laser power output (Figure 1).



Figure 1

1.2 Working mode setting

- 1) Switch to “Continuous” working mode by pressing “Mode” button. The screen will display “C” icon (Figure 2).



Figure 2

1.3 Timer setting

- 1) Select the working time 30s-3 minutes by pressing “Time” button.

1.4 Start and Pause

- 1) Press “ON/OFF” button to start, pressing again to pause.

- Tip:** 1) When the laser diodes are working, if user wants to adjust the time, need to click “OFF” to pause firstly.
2) Instantly shut down: Press red button or turn the key to the left.

Automatically shut down: When stay in standby situation, will automatically shut down after 3 minutes.

1.5 Shut down

- 1) Press red button, and turn the key to the left (Figure 3).



Figure 3

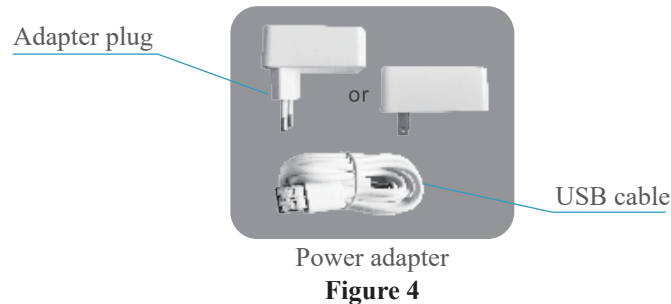
2.Treatment Recommendation &Guidelines

Week	Time	Frequency	Mode
1	30s-1 minutes	2-3 times	Pulsed
2	1-2 minutes	2-3 times	Continuous
3+	2-3 minutes	2-3 times	Continuous

Attention: All treatment session increase or decrease have to be adjust-ed according to actual conditions. It’ s better to take the operation advice from the veterinary.

Charging Instructions

Please charge timely when the battery icon appears almost empty (one or no more bars) on the LED screen to ensure the normal service life of the battery. Please insert end A of the power adaptor to a household socket, and insert end B of the power adaptor to the jack of the device for charging (Figure 4). Buzzer "ticks" twice and the icon of the battery on the LED screen shows that the device is charging. When the device is fully charged, the icon of the battery displays all the bars.



FREQUENTLY ASKED QUESTIONS

Q: HOW TO DEFINE CLASS IV LASER THERAPY?

Class IV laser therapy, also known as high-power or high-intensity laser therapy, is a type of medical treatment that uses a laser to penetrate deep into tissues to promote healing and reduce pain and inflammation. Class IV lasers are the most powerful type of therapeutic lasers, with an output of over 500 milliwatts. They are typically used to treat acute and chronic musculoskeletal pain, including back pain, arthritis, and sports injuries. The therapy works by

stimulating cellular activity and increasing blood flow, which helps reduce inflammation and accelerate tissue repair.

The treatment is typically administered by a healthcare professional, such as a physical therapist or chiropractor or veterinary, who will use a handheld laser device to apply the laser energy to the affected area. The treatment is painless and typically lasts between several minutes, depending on the size and location of the treatment area.

It is important to note that while class IV laser therapy is generally considered safe, it is not recommended for use on patients with certain medical conditions or for those who are pregnant. As with any medical treatment, it is important to consult with a healthcare professional before undergoing class IV laser therapy.

Q: WHERE CAN USE CLASS IV VETERINARY LASER THERAPY DEVICE FOR?

A: It can be used on the chest, belly, upper back, neck, head,scalp, thighs, hips legs, feet and so on. WARNING! Never use it over your eyes, as the lights can damage your eyes.

Q: IS CLASS IV LASER THERAPY DEVICE SAFE FOR ANIMALS?

Answer: Yes, this Class IV laser therapy device is safe for animals, and treatments are well-tolerated by pets like dogs and cats. One of the biggest reasons so many vets use laser therapy is because it is a quick, simple, and safe treatment with few, if any, major side effects. This is backed by peer-reviewed clinical research, too.

Q: DO VETERINARIANS USE LASER THERAPY DEVICE WITH ANIMALS?

A: Yes, laser therapy is one of the fastest growing treatments among veterinarians in the U.S. It is frequently used in animal rehabilitation settings for pain reduction, inflammation reduction, and wound care and healing. Veterinarians also widely use it for chronic pain and mobility issues associated with arthritis treatment. Laser therapy is also used for animal pain relief and injury and wound healing, especially after surgeries.

Q: HOW OFTEN CAN I USE THE CLASS IV LASER THERAPY DEVICE?

A: If the animals have skin wound, we recommend starting off with 30 seconds treatment sessions with Class IV veterinary laser therapy device at the first week and working your way up to 1-minute session. For acute pain or a sprain, we recommend starting off with 1 minute treatment sessions with it at the first week and working your way up to 2 minutes session. For arthritis, inflammation, or chronic pain, we recommend starting off with 2 minutes treatment sessions at the first week. You can use it 2-3 times a day in either scenario. We recommend using Class IV veterinary laser therapy device 5 days per week, depending on the wellness goals. Do not use continuously for more than 10 minutes, and wait at least 6 hours between 10 minutes sessions.

Q: SHOULD I SHAVE THE HAIRS OVER THE TREATMENT AREA?

A: For the Class IV veterinary laser therapy device to work most effectively, it is best to use device directly over bare skin. However, you may use the device to light the hairs, just the effect will be affected. You could keep the light probe away from the skin about 2cm.

Troubleshooting

1. The device is not turning on.
 - a. Press the ON/OFF button for 3 seconds.
 - b. Connect the AC adaptor to charge for 2 hours more.
2. System shuts off automatically.
 - a. Connect the AC adaptor to charge for 2 hours more.
 - b. Allow Device to cool down for several minutes, then attempt to turn on again.
3. Some lights appear not to be on.

The infrared (IR) light spectrum is not visible to the human eye. Therefore, these lights will look as if they are not on, but they are operating correctly.

Maintenance and Preservation

- 1) If the device breaks down, please check below “Trouble-shooting Instructions”, or directly contact the seller. Do not disassemble or repair by yourself without permission.
- 2) Please use an alcohol base rub to clean and sterilize the contact surface of the device.

3)Please keep the device away from humidity, high temperature and direct exposure to sunlight.

4)Please do not place the device together with hard objects.

5)To maximize the life of the battery, please charge for at least 8 hours for the first three times.

6)Regardless of use, please charge the battery at least every 4 to 6 months, which is beneficial for battery maintenance.

Warranty

TheyPet Class IV Veterinary Laser Therapy Device offers 1 year free warranty. Once it happens to any quality problem in this period, we will free send new parts or device for exchange. You just inform us of the product series number, short video or photos to point out the after-sales issue.

Warranty Card				
User name		Tel		Responsible person
Product name		Product model		Serial number
Date of purchase		Add		
The fault phenomenon				
Repair record				