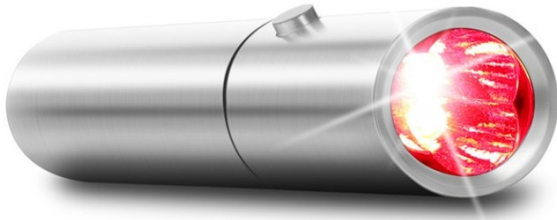


Instruction Manual
RED LIGHT THERAPY



THANK YOU FOR PURCHASING OUR LED THERAPY LIGHT .

Simplify your life with the Red Light Therapy . For your convenience, please read the following closely before using the product as it may explain important operating procedures.

The device use combo red 630nm 660nm and Infrared 850nm leds which is chosen to give the ideal light intensity for biological effects anywhere on the body .

01. INCLUDE IN THIS PACKAGE

- 1* Light
- 2* Rechargeable Battery 18650
- 1* Battery Charger
- 1* User Manual
-

02. BENEFITS

Temporary relief of minor muscle and joints pain , arthritis and muscle spasm, relieving stiffness , promoting relaxation of muscle tissue .

03. DIRECTIONS FOR USE

Hold the unit over the painful area at a distance anywhere from touching the skin to 1 inch away from the skin , depending on the depth of treatment desired . The Red light penetrates up to 1 inch into your tissues or joints .

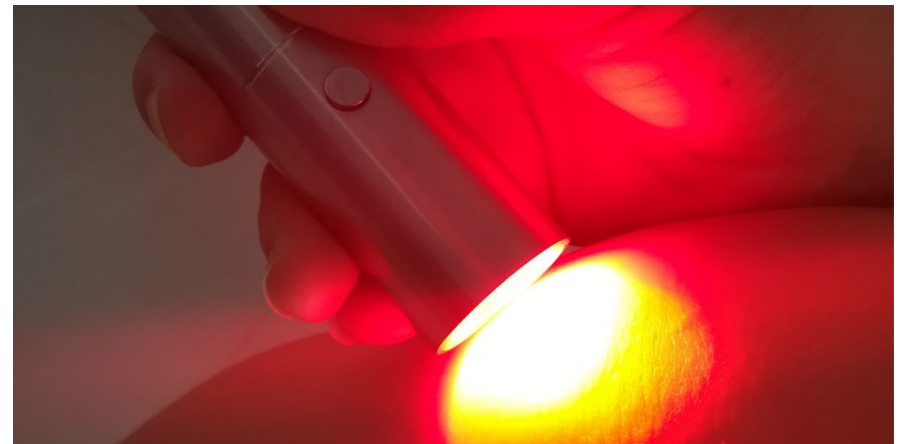
Hold the unit on the treating area for 5 minutes , guides as below : Session last for at least 3 weeks .

Pain Level	Light Pain	Average Pain	Deep Pain
Dosage	Per Treatment Spot Once a day	Per Treatment Spot Twice or 3 a day	Per Treatment Spot 3 times a day

- Don't keep the device on for more than 5 minutes at a time . If you want to treat several parts of your body consecutively , TURN OFF the device for at least 1 MINUTES, after every 5 minutes ON . This will keep the unit from overheating .
- The treatment spot is an area covered by the red light beam . A small joint ie. knuckle of a finger, should have only one treatment spot , because the light shines over the entire affected joint .



For wrist treatment



For knee treatment .



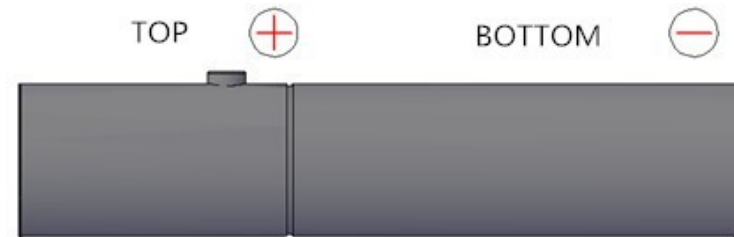
For finger treatment .

- How to install battery ?

Insert the Battery provided on the battery compartment .

- Positive Pole against the TOP .
- Negative Pole against the BOTTOM .

Attention : Only use 18650 battery .



04. PRODUCT SPECIFICATION

Product Size	D26*120.5mm	Net Weight	0.21 KG
Material	Stainless Steel	Wavelength	630:660:850nm
Irradiance	1 inch : 120 mW / c m ²	Irradiance	3 inch : 45.0 mW / cm ²
Illuminance	180 lux at 15 cm	Battery	18650
Warranty	24-Month	Lifespan	50,000 Hours

06. Warning

- Don't use the light around water .
- Don't stare directly at the light .
- Don't treat near the eyes .
- The light should NOT be used by children under the age of 13 and pregnant woman .